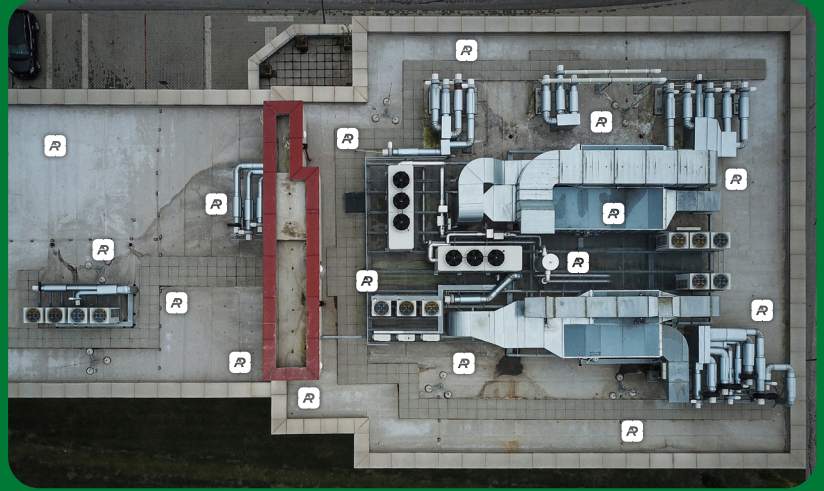


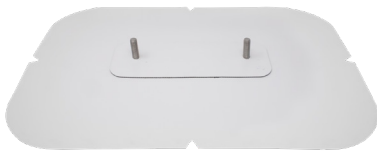


**ANCHOR  
PRODUCTS®**  
Connections That Last

The U3400-PVC is a lightweight rooftop attachment system that is leak-proof by design. It is accepted by major roofing manufacturers and is included in their warranties. The U-Anchor membrane is matched to any PVC roof type, manufacturer, and color, making it versatile for any PVC rooftop project.



## U-ANCHOR®



Front



Back

## U3400-PVC

### Product Description

The U3400-PVC is a lightweight rooftop attachment system consisting of a U-Anchor 3000 Series plate and cover membrane. The cover membrane is factory sealed to the top of the plate. The U3400-PVC provides a positive, watertight, manufacturer accepted attachment for mechanically attached or fully adhered PVC single-ply membranes.

The U3400-PVC secures rooftop equipment quickly, safely, and effectively.

### U-Anchor Advantages

- Extremely strong
- Lightweight
- Fast installation – installs in less than five minutes
- Can be installed on any surface from flat on the roof to vertical on a parapet wall
- Completely watertight when installed properly

### Equipment Attachment

- The U3400-PVC is attached by fastening through the roofing assembly into the structural decking with 2-12 approved fasteners. The membrane cover is then hot air welded around the perimeter to the roof membrane. Fastener selection is dictated by the system assembly, deck type, and the project engineer.
- To securely mount your rooftop equipment to the U-Anchor, after it is installed, the connection nut must be fastened to approximately 20-25 lbf-ft. Use a calibrated torque wrench during the installation to ensure appropriate results are achieved. Excessive torque may damage the U-Anchor.
- **Material Compatibility:**  
The U-Anchor bolt is stainless steel and all attachments provided by Anchor Products are tested as a system and designed to be compatible. Refer to installation instructions and the specified roofing material manufacturer requirements before installing.

### Manufacturer's Warranty

- **Anchor Products Warranty**  
Standard 20-Year Limited Material Only Warranty



**ANCHOR  
PRODUCTS®**  
Connections That Last



# ANCHOR PRODUCTS®

Connections That Last

Make the right choice for rooftop attachments with the U-Anchor. It's a one-of-a-kind attachment for commercial rooftop equipment securement.



## Codes & Approvals



FM 4481 - Anchors for roof mounted equipment  
FM Approval with selected membranes

## Testing

- **Results: Plate performance only**  
Ultimate Load - Shear: 8557 lbs.  
Ultimate Load - Tension: 6032 lbs.
- Tested in accordance with FM 4481 Section 4.1 over 1/2" Steel. Assembly specific results may vary. Please contact Anchor Products® directly for additional testing results and information.
- The shear value is obtained by testing at the base of the bolt. Account for the moment force of any attachment that increases the height of the connection point.

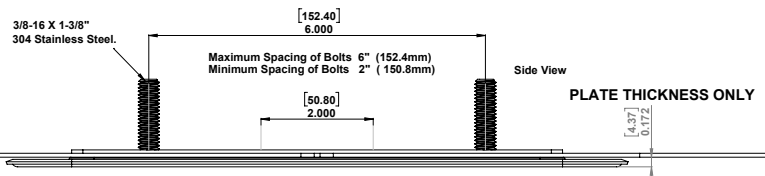
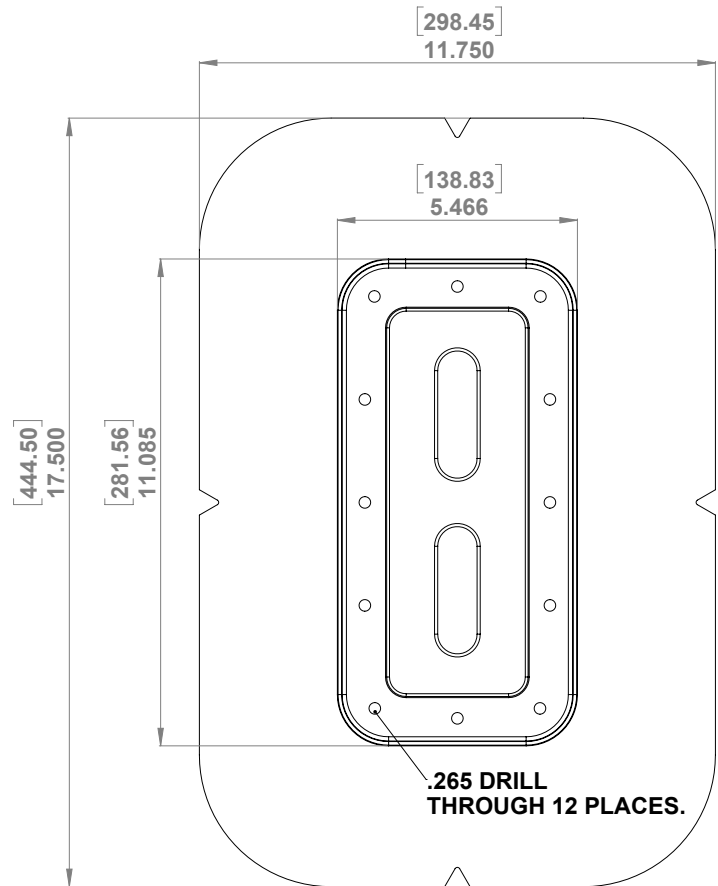
## Product Specs

- **Bolt**  
3/8"-16 x 1-3/8" Bolt\*  
Material Type: 304 Stainless Steel
- **Plate**  
Dimensions: 11" x 5.5"  
Fastener Hole Diameter: 0.265" (12 holes)  
Material Thickness: 0.047"  
Material Type: G90 Galvanized Steel
- **Cover Membrane**  
Manufacturer: Brand and Non-Brand Specific  
Color: White (Other colors available)  
Length: 17.50" Width: 11.75"  
Thickness: Default 60 mils
- **Patents**  
Visit [www.anchorp.com/resources/patents](http://www.anchorp.com/resources/patents)

## Packaging Specs

- Sold Individually OR Full Box Quantity
- Individual Weight: Approx. 1.4 lbs.
- Full Box Quantity: 10 units
- Box Weight: Approx. 17 lbs.
- Box Dimensions: 19" x 14" x 14"
- Full Pallet Quantity: 24 boxes
- Pallet Dimensions: 40" x 48" x 61"

## U3400-PVC Dimensional Drawing



Click Here

[For Warranty Information](#)



Call Us Now!  
888-575-2131

[anchorp.com](http://anchorp.com)

\* Specified bolt option is standard. Custom options may be available for additional charge. Lead times may apply depending on roofing manufacturer and product availability.