

# Sikalastic® RoofPro Systems

## REINFORCED LIQUID-APPLIED ROOFING AND WATERPROOFING SOLUTIONS

BUILDING TRUST



# ADVANCED TECHNOLOGY : SEAMLESS LIQUID APPLIED ROOFING AND WATERPROOFING

## Sikalastic® RoofPro Systems

### SINGLE COMPONENT TECHNOLOGY

Sikalastic® RoofPro membrane resins eliminate the labor costs, inconvenience, and potential error involved in mixing multiple components. Our technology promotes complete even curing without variations in membrane performance that can occur if proper mixing ratios of multiple components faulty. Application working time is greatly extended, minimizing material waste which can occur due to premature curing and unused material.

### REFLECTIVE, FIRE-RATED, WIND-RATED, AND ALKALINE-RESISTANT

Sikalastic® RoofPro systems meet or exceed many industry standards. Our resins are available in colors with a Cool Roof Rating reflectivity. They are tested to ASTM E-108 Class A fire resistance, wind uplift ratings up to 1-990, and they have an alkalinity resistance. No additional surfacing is needed to achieve these performance ratings.

### SIKALASTIC ROOFPRO SYSTEMS WITH MTC (Moisture-Triggered Chemistry)

This unique technology is incorporated with our resins and allows the material to use atmospheric moisture to trigger the curing process. The waterproofing membranes are capable of curing in a wide range of conditions including extreme temperatures and humidity variances.

Moisture-triggered chemistry provides Sikalastic® RoofPro systems with an increased tolerance to substrate and incidental moisture at the time of application.

The systems are waterproof shortly after application, providing protection against sudden rainstorms and adverse weather conditions.

**Due to its unique moisture-triggered chemistry, our systems provide numerous installation advantages that other liquid-applied systems cannot match:**

- Sikalastic® RoofPro polyurethane systems do not release Co<sub>2</sub> during the curing process, which can cause outgassing and bubbling
- Typical polymethyl methacrylate and other multi-component systems, are complicated to use and have a high weather sensitivity
- Sikalastic® RoofPro systems are more applicator friendly and are very workable in temperature extremes, particularly hot weather
- Unlike hot-applied rubberized systems, Sikalastic® RoofPro systems do not require a separate UV-resistant protection layer, and do not require separate sheet rubber flashing materials



## KEY SYSTEM BENEFITS

Using liquid-applied technology eliminates traditional roofing and waterproofing weaknesses and enhances system performance:

- Eliminating causes of system failures
  - > Seamless application, eliminates lap seams
  - > **Integrated self-adhering, self-terminating flashings, eliminates termination bars and caulking**
- Liquid applied membrane and flashings conform to virtually any shape and profile, effectively eliminating pitch pans, metal sleeves, etc.
- 100% membrane and flashing reinforcement provides enhanced strength and durability throughout
- Direct bonding to the substrate prevents lateral water migration



- Exceptional adhesion to most common substrate materials including: concrete, brick, terra-cotta, limestone, wood, glass, copper, steel, aluminum, existing bituminous roofing, and many single-ply membranes
- Same-day primer and membrane installation is possible

## OFFERING A WIDE RANGE OF APPLICATIONS, SIKALASTIC® ROOFPRO PROVIDES EXCELLENT SOLUTIONS FOR MANY ROOFING AND WATERPROOFING APPLICATIONS:

### ROOFING

- **Built-Up Insulated Roofing** - Reflective, energy-efficient application over cover board and polyisocyanurate foam insulation
- **Direct-to-Substrate Roofing** - Heavy-duty application to structural concrete and wood decks
- **Protected Membrane Roofing** - Seamless, self-flashing installation under extruded polystyrene insulation with stone or concrete paver ballast
- **Recover Roofing** - Direct application to existing asphaltic, modified bitumen, and single-ply membranes, potentially eliminating the need for costly replacement of the existing roof
- **Adds Minimal Additional Weight** - less than 1 psf.



### REPAIR

- **Existing Flashings** - Replace deteriorated wall, base, and penetration flashings, pitch pans, expansion joints, etc.
- **Unique Conditions** - Through-wall flashings, lintel protection, stairs and walkways, planters and tree pits

### RESTORATION

- **Decorative Elements** - Preserve and protect water tables, ledges, eyebrows, cornices, built-in gutters, dormers, domes, etc.
- **Metal Roofing** - Retain profile of standing seam, valleys, batten, and flat seam roofing; seal overlap joints, penetrations, and other problematic areas

### WATERPROOFING

- **Plaza Deck Waterproofing** - Seamless, self-flashing waterproofing under tile, concrete pavers, brick, asphalt, paving stones, concrete, or asphalt pavement
- **Balcony and Terrace Waterproofing** - Alkaline-resistant waterproofing under tile, pavers, and wood decking. Waterproofing membrane can be applied with integral decorative aggregate or terrazzo or terrazzo-flaked surfacing
- **Vegetated Roofing** - Root and rot-resistant waterproofing under growing media and associated hardscape



**REINFORCEMENT OPTIONS:  
ALLOW EXCEPTIONAL VERSATILITY IN APPLICATION,  
EVEN ON THE SAME PROJECT**

- **Reemat Fiberglass Mat** – High tensile-strength reinforcement, eliminates visible reinforcement overlaps, conforms to many flashing conditions without special cutting and fitting
- **Non-Woven Polyester Fleece** – Defined-thickness reinforcement, allows a single-pass wet-on-wet application, ideal for many flashing conditions with sharp bends and angles

**RESIN OPTIONS:  
AVAILABLE WITH A NUMBER OF OUR LIQUID  
PRODUCTS PROVIDING COST-EFFECTIVE, HIGH  
PERFORMANCE SOLUTIONS TO VARIOUS ROOFING  
AND WATERPROOFING APPLICATIONS**

- **Sikalastic®-621 TC:** Moisture-triggered polyurethane base and top coat resin for use with fiberglass Reemat and polyester Fleece reinforcements giving added fire resistance
- **Sikalastic®-641 Lo-VOC:** Low odor, Low VOC version of Sikalastic-621 TC, meets California SCAQMD requirements, formulated patented with Sika's i-Cure technology for a non-outgassing, no Co2 emitting cure
- **Sikalastic®-624 WP:** Moisture-triggered polyurethane base and top coat resin for use with fiberglass Reemat and polyester Fleece reinforcements with added Alkaline resistance for cementitious overburden applications
- **Sikalastic®-644 Lo-VOC:** Low odor, Low VOC version of Sikalastic-624 WP, meets California SCAQMD requirements formulated patented with Sika's i-Cure technology for a non-outgassing, no-Co2 emitting cure



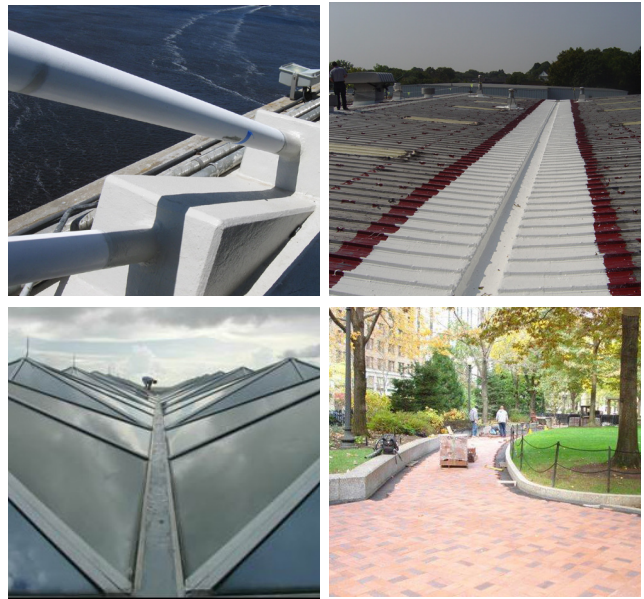
**ROOFING AND WATERPROOFING WARRANTIES:**

Warranties are available depending on system configuration. Sikalastic® RoofPro systems are available for 10, 15, 20, and 25 year durations. Warranted systems require project registration approval by the Sika technical department, and field inspection of the installation by Sika technical field representatives.

**SINGLE SOURCE WARRANTIES**

These are an extension of the Sika warranty program. Sikalastic® RoofPro systems are able to provide building owners with single source warranty coverage, ensuring component compatibility throughout the roofing or waterproofing assembly.

- **RoofPro Built-Up System Assembly:**  
Includes vapor barrier, insulation, cover board, insulation adhesive, insulation screws & plates, edge metal
- **RoofPro Plaza Deck/Protected Membrane System Assembly:**  
Includes drainage mat, extruded polystyrene insulation, concrete pavers & pedestals, edge metal
- **RoofPro Vegetative/Hardscape System Assembly:**  
Includes drainage mat, extruded polystyrene insulation, water retention mat, filter fabric, growing media & sedum, concrete pavers & pedestals, edge metal



**TECHNICAL SUPPORT**

Sikalastic® RoofPro systems are supported nationwide by Sika professional technical and sales representatives; they are experienced in developing and overseeing cost effective solutions for a wide range of application conditions.

CSI-format editable guide specifications and CAD-based assembly and flashing details are available.

Technical field services are provided by a dedicated team of hands-on experts in liquid applied technology.



# PRIMER MATRIX

Substrate	Roof Recovers	New Roof	Waterproofing	Concrete & Tile Overburden	Planters, Greenroofs	Plaza & Balcony	Protected Membrane	Equipment Pads	Gutters	DTE Primer	Concrete Lo-Voc Primer	501 Primer	502 Primer	503 Primer	504 Primer
Concrete	X		X			X	X			X			X		
New Concrete (28 Day Cure)						X				X <sup>1</sup>					
Stainless Steel	X		X									X <sup>3</sup>	X <sup>3</sup>		
Aluminum	X		X									X <sup>3</sup>	X <sup>3</sup>		
Galvanized	X		X									X <sup>3</sup>	X <sup>3</sup>		
Lead	X		X									X <sup>3</sup>	X <sup>3</sup>		
Brass	X		X									X <sup>3</sup>	X <sup>3</sup>		
Cast Iron	X		X									X <sup>3</sup>	X <sup>3</sup>		
Steel	X		X									X <sup>3</sup>	X <sup>3</sup>		
Zinc	X		X									X <sup>3</sup>	X <sup>3</sup>		
copper	X		X									X <sup>3</sup>	X <sup>3</sup>		
Cermitious/Light Weight Structural	X										X	X	X		
EPDM				X	X										X
TPO				X	X									X	
PVC	X													X	
Liquid Plastics								X	X		X <sup>2</sup>				
Bituminous	X		X									X			
Wood	X		X										X		
DensDeck	X										X				
Securock	X										X				
Cement Board	X										X				
Terra Cotta	X						X								
Brick	X <sup>3</sup>										X <sup>3</sup>				
Stone	X <sup>3</sup>										X <sup>3</sup>				

**NOTES:**

1. Moisture content in the substrate has to be 6% or less
2. Concrete LoVoc Primer is only used with 641 & 644 coatings
3. Requires surface evaluation and field adhesion testing

## APPLICATION OVERVIEW (\*\*if specified)

**Step 1 – SUBSTRATE PREPARATION**



**Step 2 – INSULATION/COVER BOARD\*\***



**Step 3 – PRIMER APPLICATION**



**Step 4 – DETAILING/FLASHING**



**Step 5 – MEMBRANE APPLICATION**

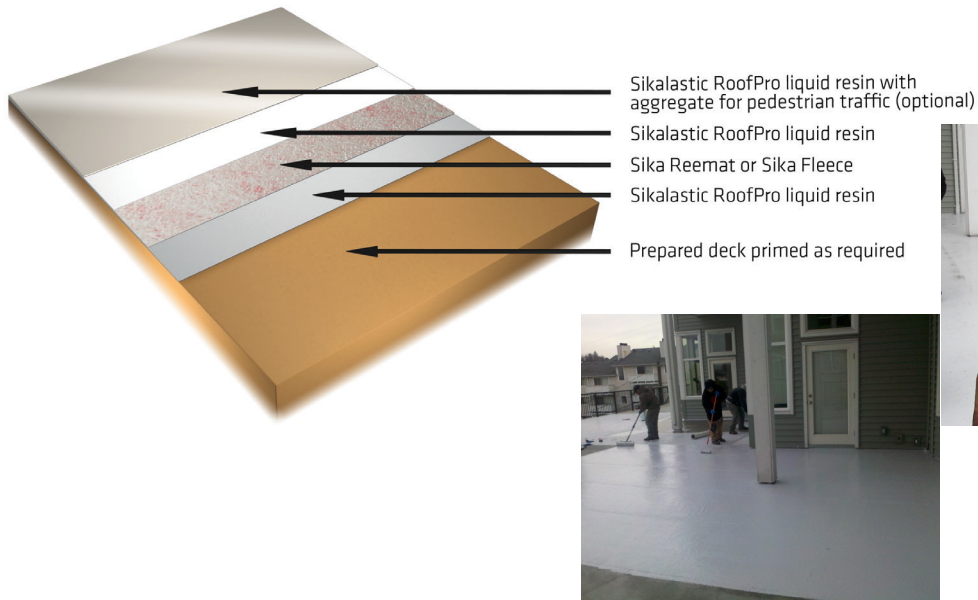


**Step 6 – SURFACING/OVERBURDEN\*\***



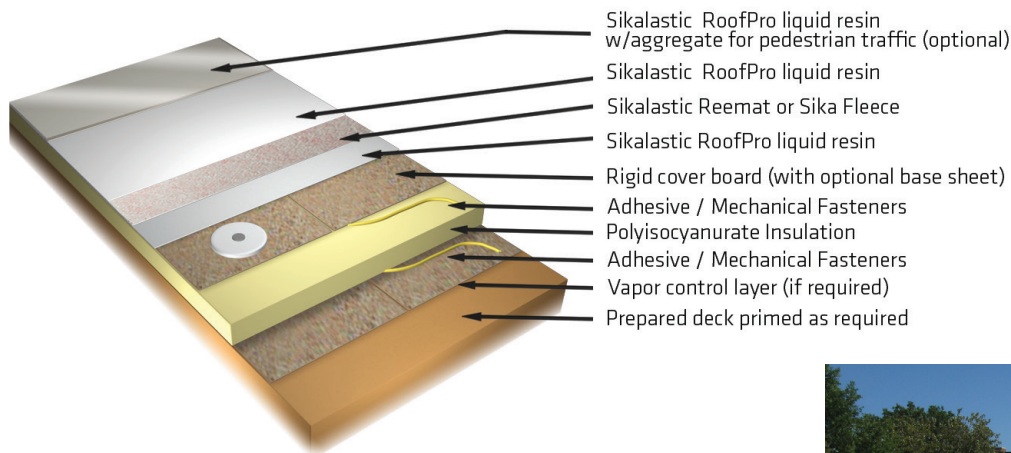
## SIKALASTIC® ROOFPRO DIRECT-TO-SUBSTRATE ASSEMBLY

Suitable for direct application to structural concrete decks, plywood decks, and many existing smooth and granule-surfaced roofing systems. Reference Product/System Data Sheet for membrane/system requirements.



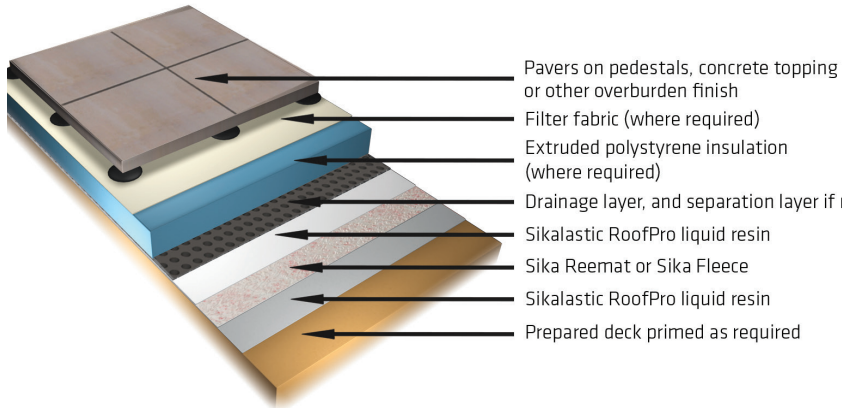
## SIKALASTIC® ROOFPRO BUILT-UP INSULATED ASSEMBLY

Suitable for applications requiring the installation of insulation, including new construction, roof replacement, and upgrading of existing roofing systems. Full System Warranty available. Reference Product/System Data Sheet for membrane/system requirements.



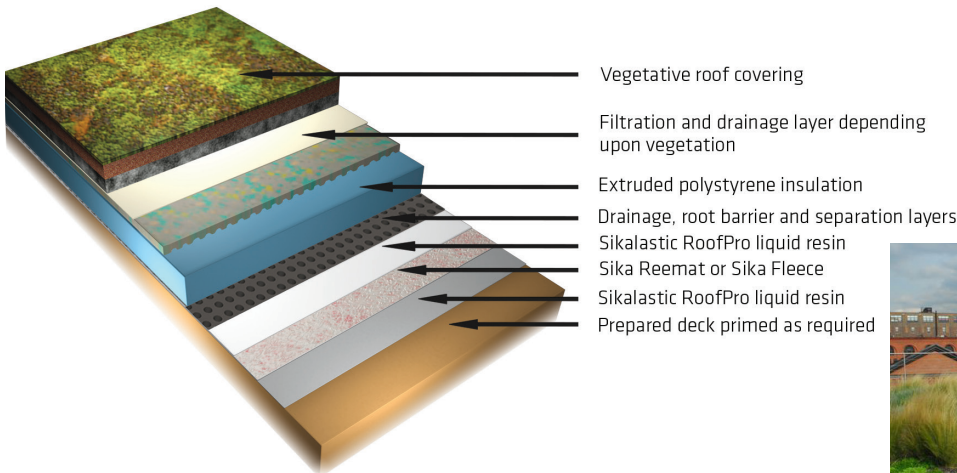
## SIKALASTIC® ROOFPRO PLAZA DECK AND PROTECTED MEMBRANE ASSEMBLY

Suitable for applications where pavers, wood decking, or tile will be installed over the roofing/waterproofing membrane. An insulation layer may or may not be included. Full System Warranty available. Reference Product/System Data Sheet for membrane and system requirements.



## SIKALASTIC® ROOFPRO VEGETATED AND HARDSCAPE ASSEMBLY

Suitable for both intensive and extensive vegetated roofing applications where growing media and plantings will be installed over the roofing/waterproofing membrane. Typical applications include hardscape such as concrete pavers or stone ballast. An insulation layer may or may not be included. Full System Warranty available. Reference Product/System Data Sheet for membrane and system requirements.



VISIT OUR WEBSITE FOR:  
SIKA LAM CONTACTS  
INFORMATION ABOUT OUR PRODUCTS AND SYSTEMS

**Sikalastic® RoofPro Systems**



## SIKA – A HISTORY OF INNOVATION

The history of Sika began in 1910 when the Gotthard rail tunnel running through the Swiss Alps was to be electrified and needed a secure waterproofing system. To address this need a completely new solution for chemically waterproofed cement, mortars and concrete was developed. This led to the founding of the company and brand of Sika. Today Sika is the global technology and market leader in specialty chemicals for construction and industry. They provide a wide range of complete construction systems and solutions worldwide.

Sika continues to pioneer innovative solutions for today's construction requirements through its multiple Research & Development facilities located worldwide. Product development is typically initiated in Sika's corporate R & D laboratories, and then further developed locally to meet climatic, regulatory, and industry demands. Sika is truly a global company with a local focus.

The Sikalastic® RoofPro family of polyurethane-based roofing and waterproofing membrane systems have a 25+ year track record of successful applications worldwide. These systems combine a uniquely-formulated liquid resin with a high strength fiberglass or polyester-based fabric reinforcement. This unique system forms a tough, resilient membrane that conforms and bonds tightly to the substrate surface.

Sikalastic® RoofPro moisture-triggered liquid resins, their primers, and fabric reinforcements represent the innovative, intelligent product design that is fundamental to Sika.

## WE ARE SIKA

Sika is a specialty chemicals company with a leading position in the development and production of systems and products for bonding, sealing, damping, reinforcing and protecting in the building sector and the motor vehicle industry. Sika's product lines feature concrete admixtures, mortars, sealants and adhesives, structural strengthening systems, industrial flooring as well as roofing and waterproofing systems.

Our most current General Sales Conditions shall apply. Please consult the Product Data Sheets prior to any use and processing.

©Sika Corporation /06.8075 /9/2022

### SIKA CORPORATION

201 Polito Avenue  
Lyndhurst, NJ 07071  
USA

### CONTACT

Phone 201-933-8800  
Fax 201-933-6225  
usa.sika.com

**BUILDING TRUST**

