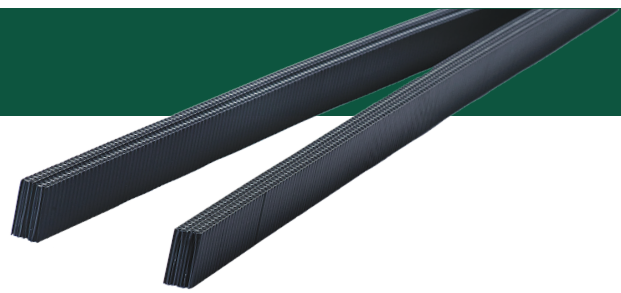


Quarrix

DryRoof

ROOF BATTEN



STEP 1

Unfold Quarrix DryRoof Roof Batten to full 8-foot length and align along pre-chalked line. Nail or staple 2" in from the starting edge. Move over to the hinge of the DryRoof Roof Batten and nail or staple 2" from hinge of the fold. (See Fig. 1; Fastener = nail or staple)

Note: Power nail or staple tools can be used to place fasteners.

STEP 2

Place a nail or staple 10" in from each of the fasteners that have already been placed. Place an additional nail or staple in the middle of the section for a total of 5 fasteners per 4-foot section of batten.

Repeat on other side of 4-foot section of the batten. Use this nail or staple pattern when fastening the remaining battens to the roof deck. Fasteners should penetrate the roof deck a minimum of 1/2". See manufacturer's specifications.

Note: Use a utility knife when cutting the DryRoof Roof Batten to desired length.

STEP 3

If fasteners are used to secure the tile to the roof, the penetration of the fastener must be into the roof deck for structural hold* according to the manufacturer's specification. (See Fig. 2)

**Quarrix DryRoof Roof Batten cannot be used for structural support of the tile.*

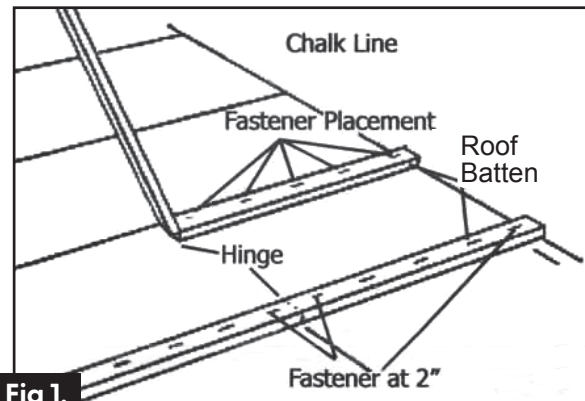


Fig 1.

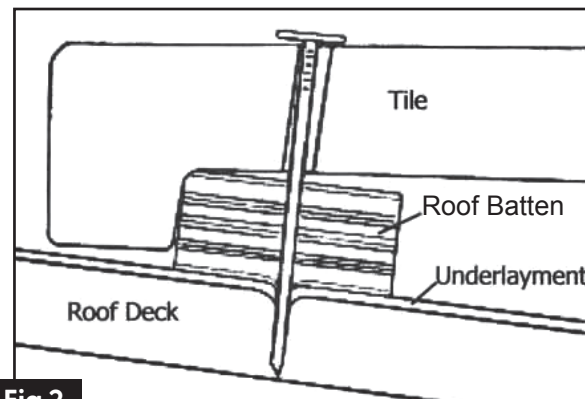


Fig 2.

Visit Quarrix.com for expert advice and installation videos.

TECHNICAL INFORMATION

General Description: Quarrix DryRoof Roof Batten is designed to be used as a method of hanging and securing various tile, metal and cedar roofing materials. The corrugated design of the plastic promotes air and water flow between the roof deck and roof covering. Net Free Area (NFA) = 5.6 sq in/lin ft

Material: DryRoof Roof Batten is composed of multiple layers of a special hollow core high density polyethylene board.

Temperature/UV Resistance: High density polyethylene (HDPE) corrugated plastic resin has a brittleness temperature to -103° F (ASTM D746) and a deflection temperature of +162° F at 66 PSI (ASTM D648). It has been tested and found to have a burn rate of 2.5 inches/minute (ASTM D635-91), a self-ignition temperature of 734° F (ASTM D1929-91a) and labeled "excellent" for a smoke density of 9.3% average (ASTM D2843-93). Black HDPE is a UV-resistant material.

Dimensions: Height 3/4" (19mm); Length 8' (2.44m); Width 1-1/2" (38mm)

Material Safety Data Sheets: Corrugated plastic products fit the definition for "articles" which are manufactured items in solid form which do not release or otherwise result in exposure to a hazardous chemical under normal conditions of use. Material safety data sheets are not necessary for corrugated plastic.

Lifetime Limited Manufacturer Warranty.

Quarrix.com | 800.438.2920

