

PREMIUM ACRYLIC AND SILICONE COATINGS

Complete Fluid Applied
Roof Restoration Solutions

Fabric-Less Coating Systems | Faster Installation | Finish Quick/Finish First

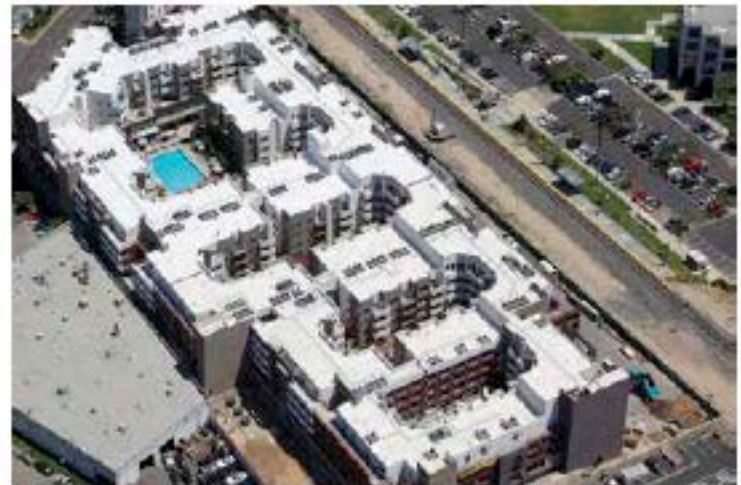


High Performance Silicone and Acrylic Coating Systems for
ThermoPlastic | EPDM | Metal | Asphalt



We Provide Total System Solutions. Not just products.

IB Roof Systems is a leading manufacturer of complete PVC roofing and coating systems for the building industry. With our 5 regional distribution centers and our Technical and Sales Representatives throughout the U.S. to provide superior training, and sales support we make your job easy. IB Roof Systems provides complete roofing solutions that exceed the industry standards. With our 40 years of roofing manufacturing knowledge and materials still performing 35 years later - are what provide you peace of mind - we will be here to support you for the next 40 years!



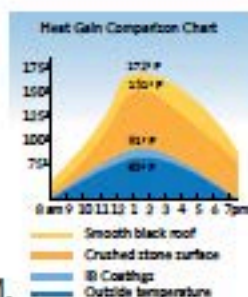
IB SUPERIOR PERFORMANCE COATINGS



Fluid-applied coatings are beneficial for both contractors and building owners. From easy installation, multiple solutions, and IB Roof's proven track record make IB a win-win. Building owners understand the value that IB quality products provide. Fluid-applied solutions deliver continued life to an existing roof, little to zero interruption of business or tenants. With a reflective, energy efficient and long lasting application - an IB Roof Coating can save you money and time on your next installation.

Built to Last

Designed to help reduce surface temperatures, minimize thermal expansion and contraction while providing exceptional resistance to UV degradation and preventative coating solutions for renewal and restoration of metal panel roofs, EPDM, thermoplastics, asphaltic and modified bitumen, concrete, and foam.



IB SILICONES

IB's high-performance elastomeric silicone coatings deliver excellent weatherproofing, UV and biological, resistance, with fire resistance over a foam insulation and other approved substrates.



IB ACRYLICS

Acrylic roof coatings provide superior durability and can be installed over single-ply, thermoplastic, metal, EPDM, and modified bitumen, built-up, installations. Our coatings provide a reflective, efficient and near maintenance free installation.

IB Coating Product Guide (Chart)

| IB COATING PRODUCT NAME | SIZE | | | | | FUNCTION | | | | | SUBSTRATE | | | | | | | COLOR | | | | | | | |
|-----------------------------|------------------|-------|---------|---------|---------|----------------|-------------|-----------|----------------|--------|-----------|----------------------|----------|------|------------|-------------|------------------|-------|-----|-------|------|-------|-----|-------|----------|
| | 10 oz | 28 oz | 2.8 gal | 5.8 gal | 5.5 gal | 275 gal tank | Finish Coat | Base Coat | Seam Treatment | Primer | Cleaner | Asphalt (Smooth BUR) | Concrete | EPDM | Foam (SPF) | Metal Panel | Modified Bitumen | PVC | TPO | Clear | Gray | Ivory | Tan | White | Dark Red |
| IB SILICONE | | | | ✓ | ✓ | | ✓ | ✓ | ✓ | | ✓ | ✓ | ✓ | ✓ | ✓ | ✓ | ✓ | ✓ | ✓ | ✓ | | | | ✓ | |
| IB ACRYLIC HT | | | | ✓ | ✓ | ✓ | ✓ | ✓ | | | ✓ | ✓ | ✓ | ✓ | ✓ | ✓ | ✓ | ✓ | ✓ | ✓ | ✓ | | ✓ | ✓ | |
| IB ACRYLIC PRO | | | | ✓ | ✓ | ✓ | ✓ | ✓ | | | ✓ | ✓ | ✓ | ✓ | ✓ | ✓ | ✓ | ✓ | ✓ | ✓ | ✓ | | ✓ | ✓ | |
| IB BLEED BLOCK | | | | ✓ | ✓ | ✓ | ✓ | ✓ | | | ✓ | ✓ | ✓ | ✓ | ✓ | ✓ | ✓ | ✓ | ✓ | ✓ | ✓ | | ✓ | ✓ | |
| IB BLEED BLOCK SS | | | | ✓ | ✓ | ✓ | ✓ | ✓ | | | ✓ | ✓ | ✓ | ✓ | ✓ | ✓ | ✓ | ✓ | ✓ | ✓ | ✓ | ✓ | | ✓ | |
| IB SEALER | ✓ | ✓ | ✓ | | | | | | ✓ | | ✓ | ✓ | ✓ | ✓ | ✓ | ✓ | ✓ | ✓ | ✓ | ✓ | | | | ✓ | |
| IB CONCRETE SEALER | | | | ✓ | ✓ | | | | ✓ | | | ✓ | | | | | | | | | ✓ | | | | |
| IB SKYLIGHT GLAZE | | | | ✓ | ✓ | | ✓ | ✓ | | | | | | | | | | | | ✓ | | | | | |
| IB RUST PRIMER | | | | ✓ | ✓ | | | | ✓ | | | | | | | ✓ | | | | | | | | | ✓ |
| IB THERMOPLASTIC PRIMER | | | | ✓ | ✓ | ✓ | | | ✓ | | | | | | | | | ✓ | ✓ | ✓ | | | | | |
| IB EPDM CLEANER | | | | ✓ | ✓ | | | | | ✓ | | | ✓ | | | | | | | | ✓ | | | | |
| IB ROOF CLEANER CONCENTRATE | | | | ✓ | ✓ | | | | | ✓ | ✓ | ✓ | ✓ | ✓ | ✓ | ✓ | ✓ | ✓ | ✓ | ✓ | | | | | |
| ACCESSORY PRODUCTS | ROLL SIZE x 324' | | | | | SEAM TREATMENT | | | | | SUBSTRATE | | | | | | | COLOR | | | | | | | |
| | 4" | 6" | 12" | 40" | | | | | | | | | | | | | | | | | | | | | |
| IB FABRIC | ✓ | | ✓ | ✓ | ✓ | | | | ✓ | | ✓ | ✓ | ✓ | ✓ | ✓ | ✓ | ✓ | ✓ | ✓ | | | | ✓ | | |

IB Acrylic HT
High-Tensile Top Coating



IB Acrylic Pro
Professional Grade Coating



IB Bleed Block
Bleed Resistant Base Coat



IB Bleed Block SS
Bleed Resistant Base Coat for Smooth Asphalt Roofs



IB Silicone
Professional Grade Silicone



IB Sealer
Moisture Cure Seam & Repair Sealant



IB Concrete Sealer
Primer/Sealer for Concrete/Masonry



IB Skylight Glaze
Acrylic Skylight Coating



IB TP Primer
Primer for Aged Thermoplastic Membranes



IB Rust Primer
Rust Inhibiting & Metal Primer



IB Roof Cleaner Concentrate
Biodegradable General Purpose Cleaner



IB EPDM Cleaner
Rinseable Cleaner for EPDM Roofs



IB Sealer Moisture Cure Seam & Repair Sealant




Features and Benefits



IB Acrylic and Silicone products meets and exceeds the industry standard for roof coatings and are a versatile, premium, high performance coating that is designed to provide a weathering surface over most aged surfaces and materials.

Proven Performance

IB Roof Systems integration of time-proven products with best roofing practices installed by quality driven IB Authorized Installers adds up to a roof with better durability, better efficiencies and potential savings through reduced utility and maintenance costs.

IB has developed and produced materials from the highest quality materials, and all of our products thoroughly tested quality checked before landing on your project.

IB only provides products to IB Authorized contractors to help ensure that the quality of application and the quality of product is capable of providing the longest industry warranties available.

DISCOVER THE DIFFERENCE

| IB ACRYLIC HT | VS | ASTM D6083 |
|---------------------------------|--|---------------------------------|
| 14 | Adhesion to Metal | ≥2.0 |
| 55% | % Solids by Volume | ≥50% |
| 66% | % Solids by Weight | ≥60% |
| 134 KU | Viscosity | 85-141 KU |
| 600% (initial) 240% (aged) | Elongation | ≥100 ≥100 |
| 500 psi (initial) | Tensile Strength | ≥200 |
| 117 lbf/in | Tear Strength | ≥60 |
| Pass No cracking or checking | Low Temperature Flexibility, @-15F (-26.1C) after 1000 hours | Pass No cracking or checking |
| 7.0 | Permeance | <50 |
| 7.3% | Water Swell | <20 |



Quality Products
Since 1978

IB Roof Systems has been producing top-tier PVC roofing materials for over 40 years.



Exceptional
Service
& Support



05
National
Distribution
Centers



05
Inside Sales
Customer
Support



07
National
Field
Inspectors



12
Hours a day
of service
7-7 cst



24
National
Sales
Reps



40
Years of
Unmatched
Service



Technical Expertise

From recommending solutions for complex details, to providing on-site training, to performing Total Systems warranty inspections, we are there.

02
Nationally
Recognized
Tech Directors

20+
Years of
Expertise per
Tech Rep

300+
Approved
Roofing
Assemblies

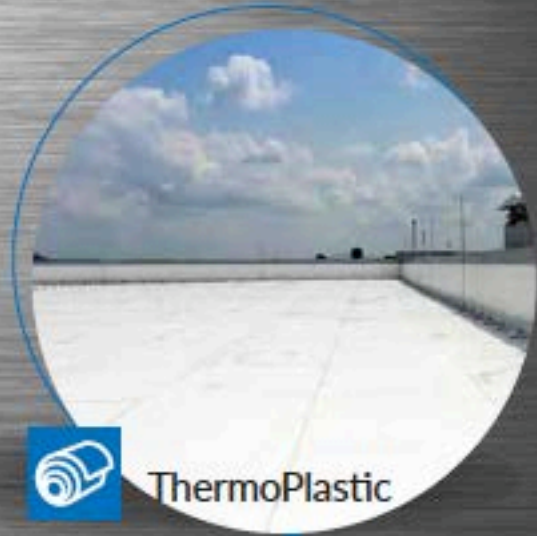
50k+
Projects under
Warranty

500m +
Square feet
Installed

We provide coatings for almost every roofing surface. From water leaks, cool-roof reflectivity, to complete roof restorations, our coatings perform many critical functions and maintenance of a building.



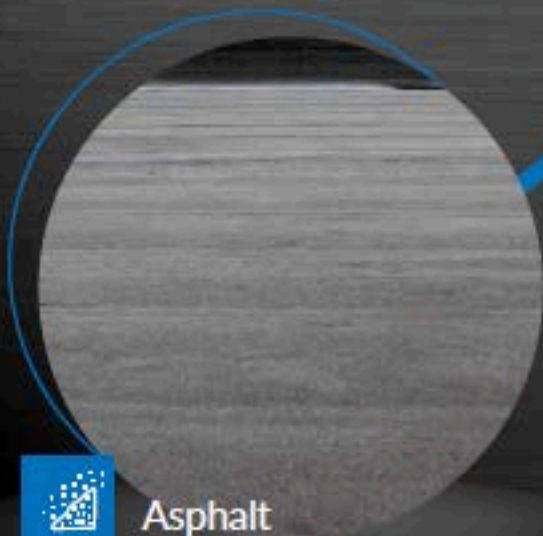
EPDM



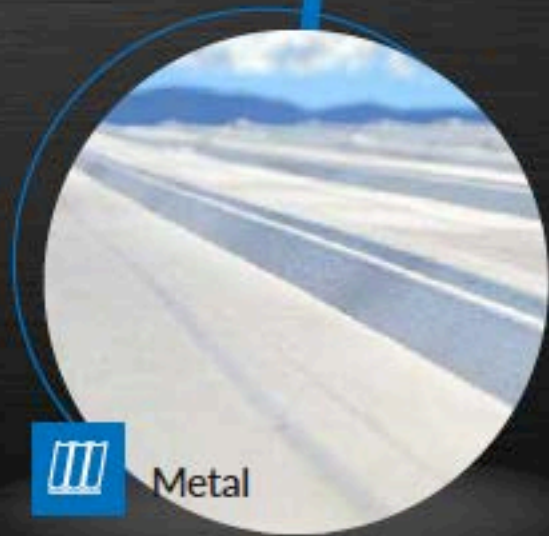
ThermoPlastic

High Performance Coating Systems

IB



Asphalt



Metal

PREMIUM ACRYLIC AND SILICONE COATINGS

IB Roof Systems proudly offers a complete line of coatings, accessories and single-ply PVC roofing products for commercial and residential uses. IB Roof Systems has been providing Industry's Best roofing products since 1978. By making products that meet the needs of contractors as well as designed for the building owner, IB is the partner you need on your next project.

We Have You Covered.

Install IB coatings with the confidence that you have selected the Industry's Best roofing materials. Through state of the art equipment and stringent quality control measures, we ensure that the products produced in our facilities throughout the United States meet the superior standards upon which we have built a reputation of excellence since 1978.



LEARN MORE!

Connect with your local sales rep, download a brochure or visit our website to learn more about our complete line of coatings and complete roof systems.
www.IBroof.com

800.426.1626 DiscovertheDifference.com

02.20



Complete Fluid Applied Roof Restoration Solutions

IB Roof Systems Corporate
8181 Jetstar Drive, Suite 150
Irving, Texas 75063

info@IBroof.com
www.IBroof.com

800.426.1626



Scan to download
a digital version